



Saint-Petersburg State Polytechnical University

Yury R. Nurulin

*Status Quo of Logistics
in Saint-Petersburg*

Saint-Petersburg

2007

Logistics in Saint-Petersburg

Saint-Petersburg – “Northern Capital of Russia” 1732-1918

Founded in 1703 by Peter the Great

59°57' North Latitude & 30°19' East Longitude .



Saint-Petersburg

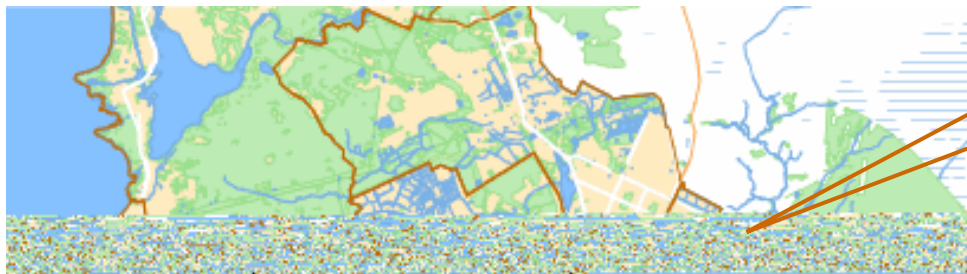


Moscow

Logistics in Saint-Petersburg

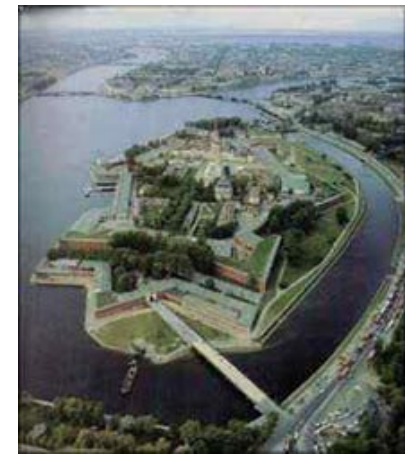
Saint-Petersburg – “Northern Venice”

Population: 4 580 600 ; Square: 1439 km²



Finnish Gulf

Administrative bodies of the City's regions



River NEVA with tributaries (40)

NEVA in the City – 32 km

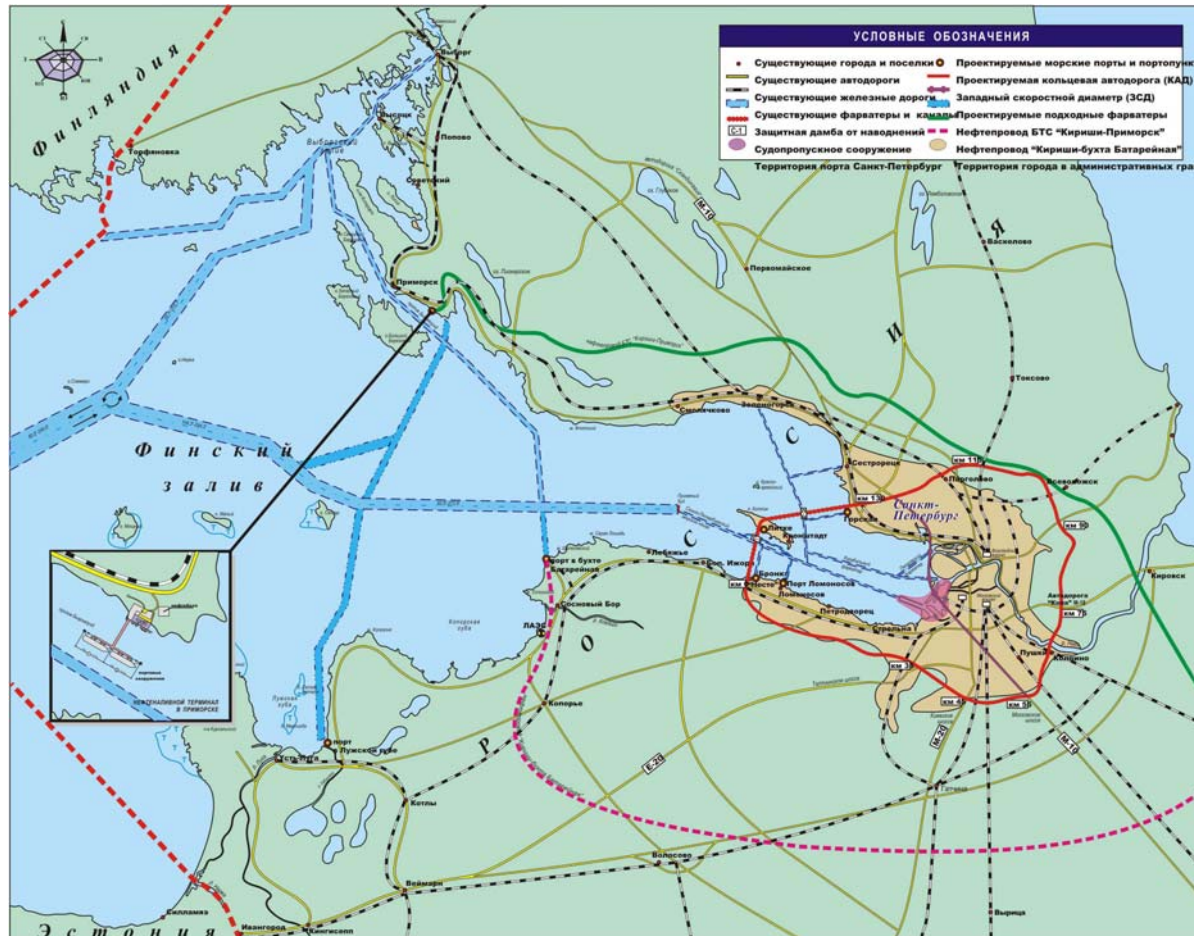
405 Bridges, including 20 opening

42 islands

Inland waterways – 10% of the territory

Logistics in Saint-Petersburg

Saint-Petersburg – “A Window to Europe”



- } Oil pipelines
- } Circular Road
- } Northern High Speed Diameter
- } Main roads
- } Navigating channels

Sea Port: 75 moorings, overall length > 11 km, including passenger moorings > 1,7 km. Capable to receive ships : draught up to 11 m, length up to 260 m.

7 River Ports in the region

Airport **Pulkovo**: Terminal 1 (domestic lines) – 1200 pas/hour, Terminal 2 (international lines) – 2500 pas/hour

5 railway stations

Logistics in Saint-Petersburg

Active Ports in Saint-Petersburg Area

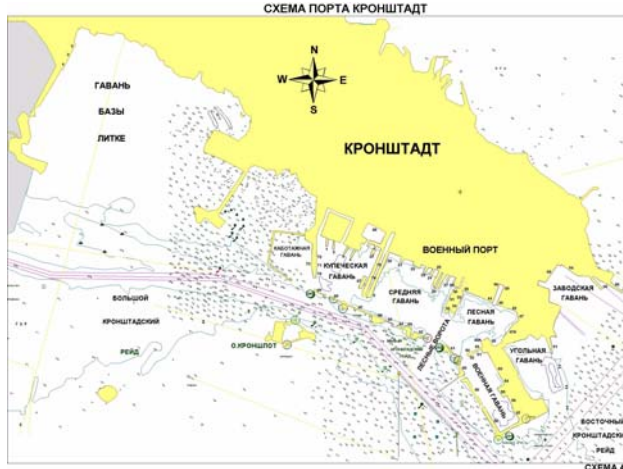
Cargo Saint-Petersburg Port



Vyborg Port



Kronshtadt Port



Lomonosov Port



Logistics in Saint-Petersburg

Transport' Sector in Saint-Petersburg: Statistic Data

Overall volume of transportation in 2006 (without railway) - 99,9 millions tons (104,9% comparing to 2005).

The most increase: automobile transport (141,9% to 2005).

Overall income of transport companies in 2006: 135,5 billion rubles (~3,8 billions Euro, 120,9% to 2005).

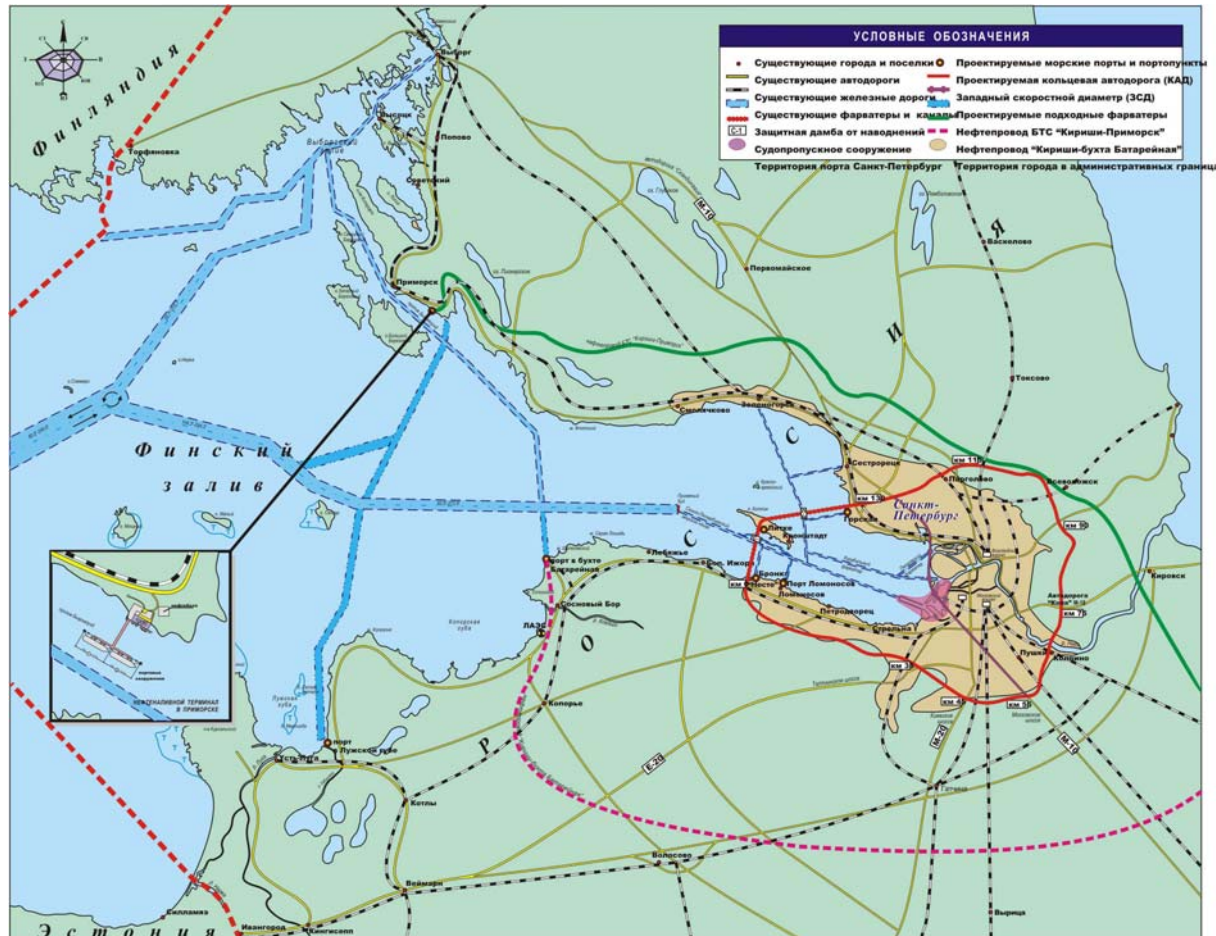
1,4 million cars and trucks registered in Saint-Petersburg.

Main problems:

- Bad quality of roads
- Narrow streets in the center of the city
- Lack of bridges
- Lack of parkings in the center of the city and near metro stations
- Bad transport's control system (traffic lights, road signs, etc.)
- Bad cross-border transport's infrastructure
- Small power of the Saint-Petersburg Cargo Port

Logistics in Saint-Petersburg

Development of Transport's Sector in Saint-Petersburg: Main Projects



- **Circular Road**
- **Orlovsky Channel**
- **Northern High Speed Diameter**
- **Paid roads**
- **Pulkovo - 3**

New ports:

- **Primorsk** – oil terminal
- **Ust-Luga**: Terminals for grain, for oil (tankers up to 120 000 tons), for mineral fertilizers, for wood, for coal, for perishable goods, for containers. Railway-and cars ferry to Germany

24 billions rubles (676 millions Euro) investments for railways and roads to Ust-Luga Port



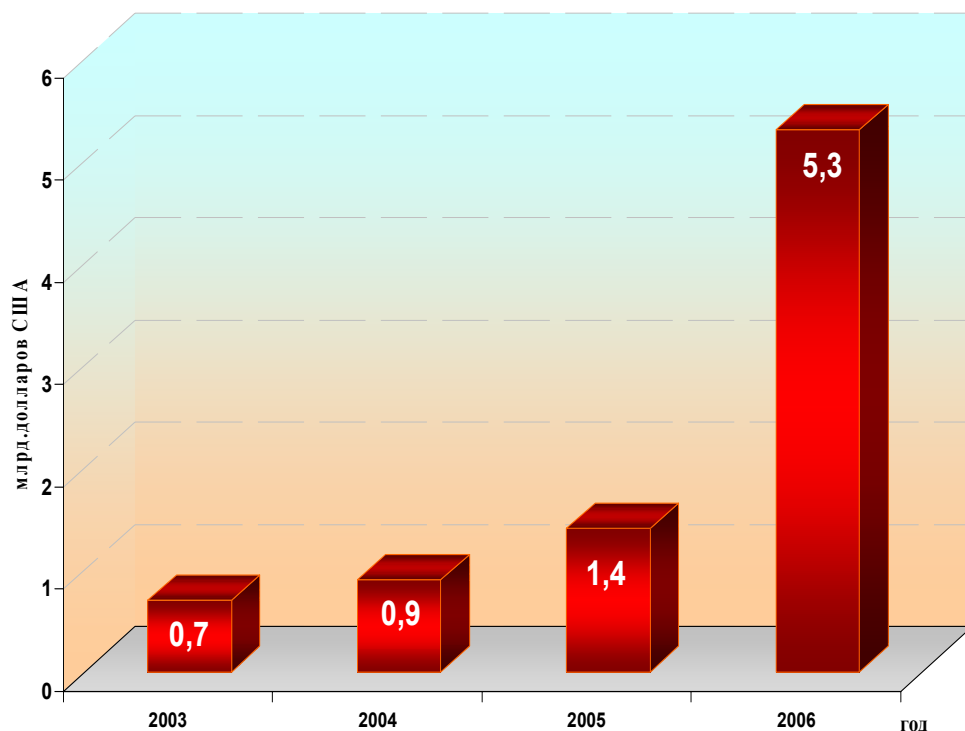
Logistics in Saint-Petersburg

Transport and industrial sectors are connected indissolubly

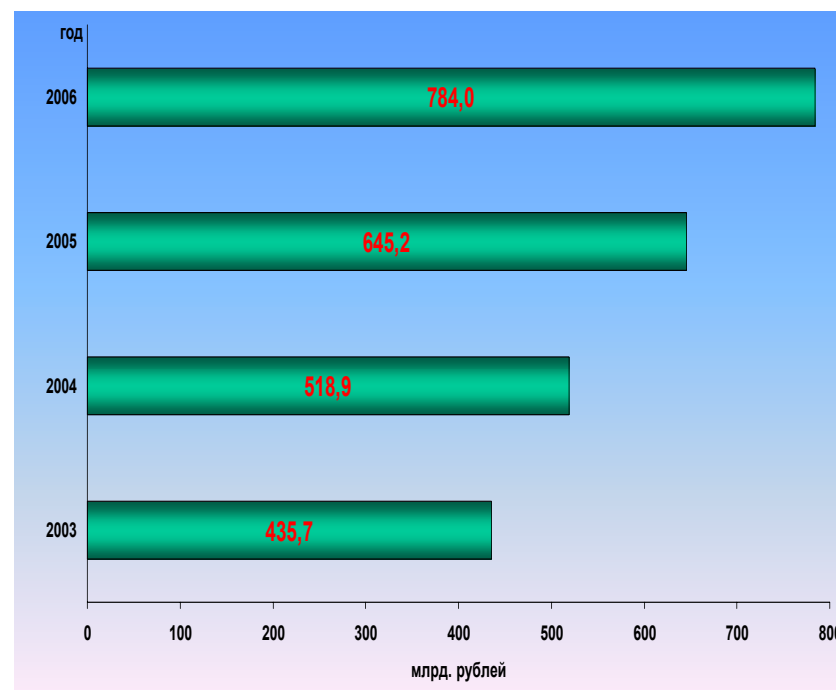
Industrial Logistics in Saint-Petersburg

Rate of industrial development

Foreign investments in Saint-Petersburg



Total income of Saint-Petersburg companies

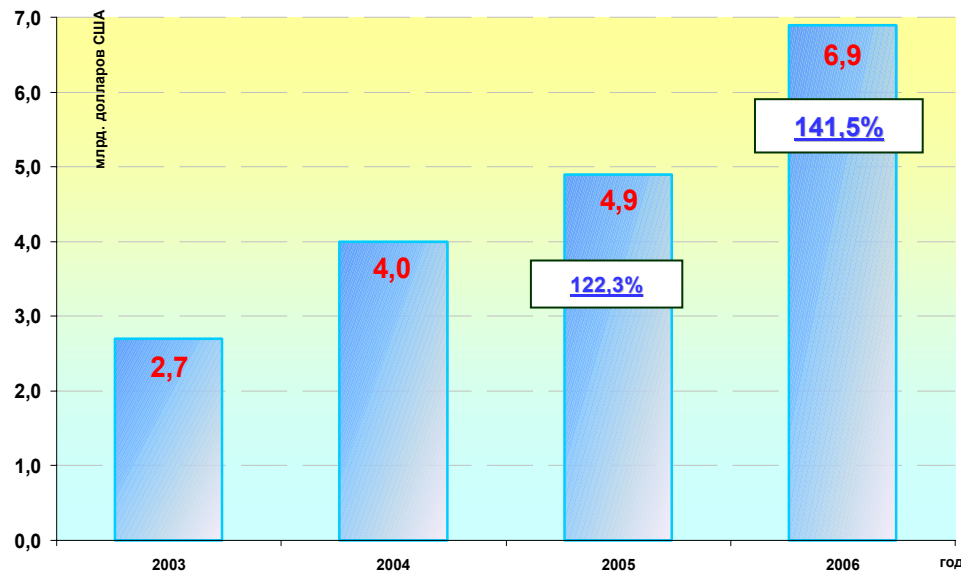


Logistics in Saint-Petersburg

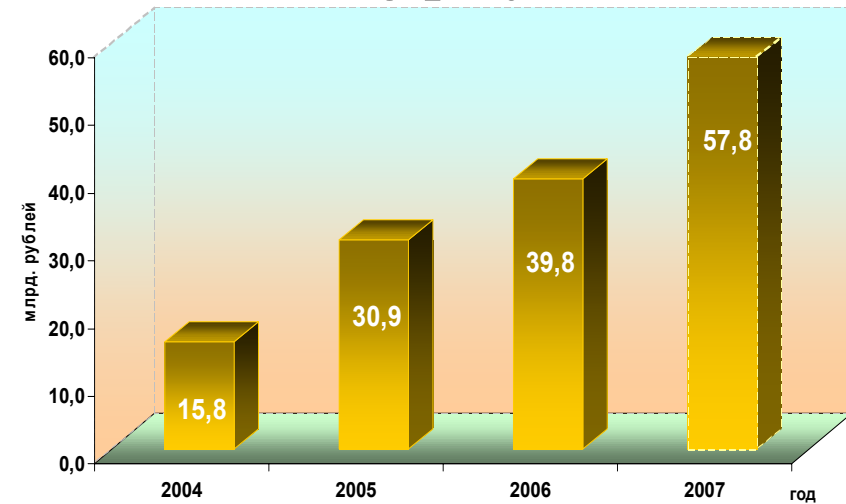
Industrial Logistics in Saint-Petersburg

Rate of industrial development

Volume of export

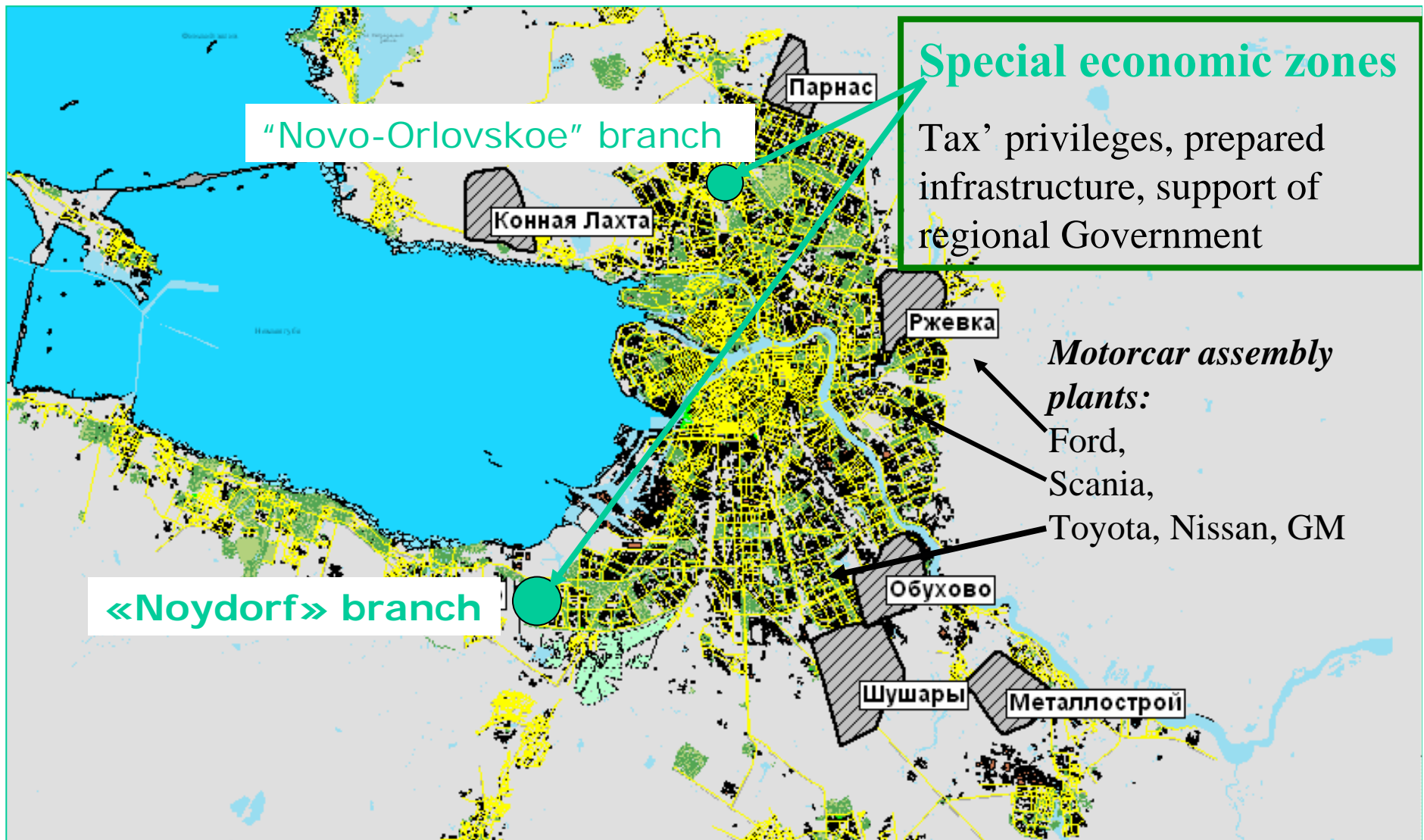


Federal investments for building projects



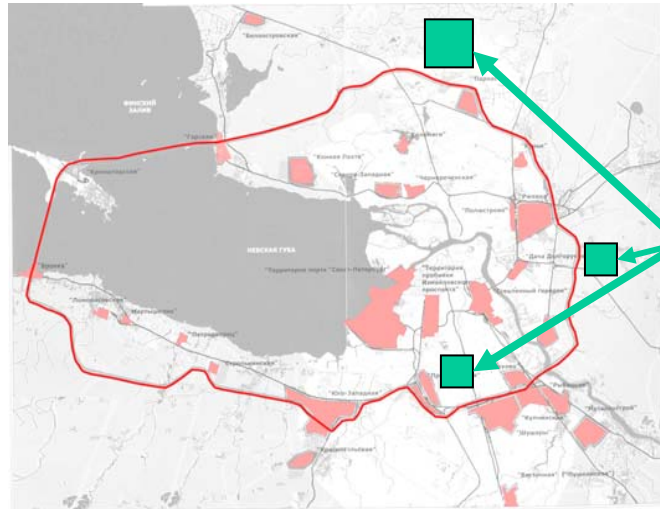
Logistics in Saint-Petersburg

Industrial zones in Saint-Petersburg



Logistics in Saint-Petersburg

Commercial Networks in Saint-Petersburg

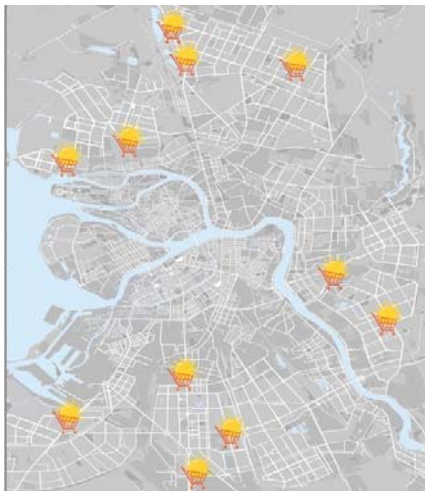


*Trade zones
near the
Ring Road*

Pyaterochka[®] –
network of medium
food shops (224 in the
region)



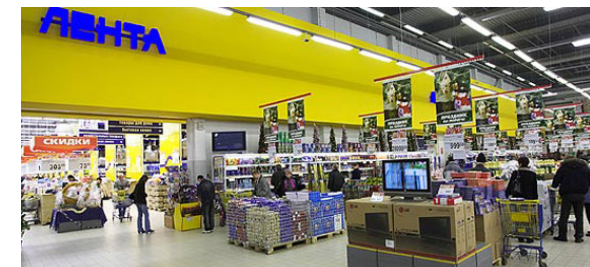
O'K[®]- network of hypermarkets
(11 in Saint-Petersburg)



Karusel[®] network of hypermarkets
(13 in Saint-Petersburg +2 in the region)



Lenta[®] - network of
hypermarkets
(13 in Saint-Petersburg)





Saint-Petersburg State Polytechnical University

Yury R. NURULIN

***Head of the International Educational
Program in Logistics***

29 Polytechnicheskaya, 195251, Saint-Petersburg, Russia

Phone: +7-812-294 42 39

Fax: +7-812-534 33 14

E-mail: nurulin@acea.neva.ru